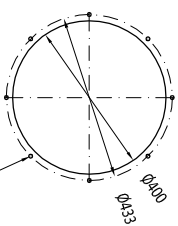



INLET FLANGE DETAIL

8 connections to screw M8



OUTLET FLANGE DETAIL

8 connections to screw M8

		ITEM:	KOMPAC AIR 3x2 CCD
			Q= 6000 Nm ³ /h
		REV:	4/20/2024

TECHNICAL SPECIFICATIONS		kg	940
Weight		nr	6
Number of filtering elements		m ²	113
Filtering surface		Pa	5000
Max working under pressure		°C	-10<T<60
Working temperature		Ø	1"1/2 GAS
Pneumatic feeding	(ISO Class 2.4.1 according 8573-1:2000)		230 V AC 50Hz
Electric control panel feeding		jet-pulse	
Cartridges cleaning system		nr	3
Number of cleaning valves		Ø1"	1/2 - 24 V DC
Type of cleaning system valves		bar	5
Compressed air tank working pressure			
PERFORMANCE CHARACTERISTICS			
Nominal air flow		Nm ³ /h	6000
Nominal static pressure		Pa	2860
Nominal fan power		kW	7.5
Max compressed air consumption		Nl/shot	217