



TAMA®

**AIR FILTRATION
I B E R I C A**

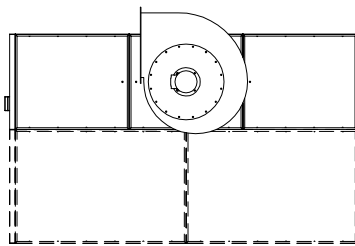
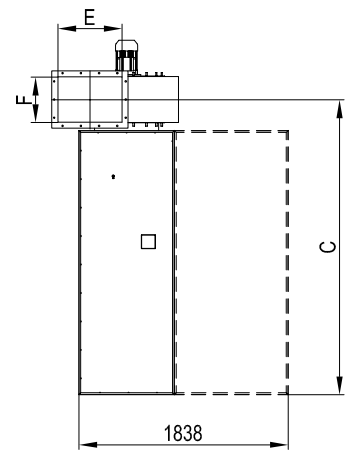
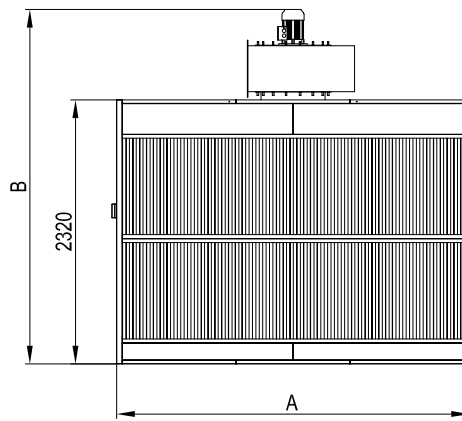
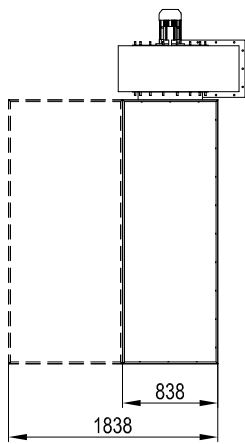
FILTER PAINTING BOOTHS



Tama's filter painting booths are made with zinc-coated panels. It is a wall suction system, ideal for sanding and dusting of medium-large elements, and smoke extraction. They permit to keep clean the dusting area with an advantage for workplace healthiness. Tama's filter painting booths are suitable for the use in zones with potentially explosive atmospheres and ST1 dust according to class certification string II 3 D Ex tD A22 T200° C -10° C ← T ← 40.



FILTER PAINTING BOOTHS



Mod.	Flow [m ³ /h]	DIM.			FAN		
		A [mm]	B [mm]	C [mm]	Power [kW]	E [mm]	F [mm]
PA - 1000	4000	1100	3040	2560	1,5	453	322
PA - 2000	8000	2100	3090	2580	2,2	507	361
PA - 3000	12000	3100	3150	2600	3	569	404
PA - 4000	16000	4100	3180	2600	4	569	404